

PUENTE BASIN WATER AGENCY

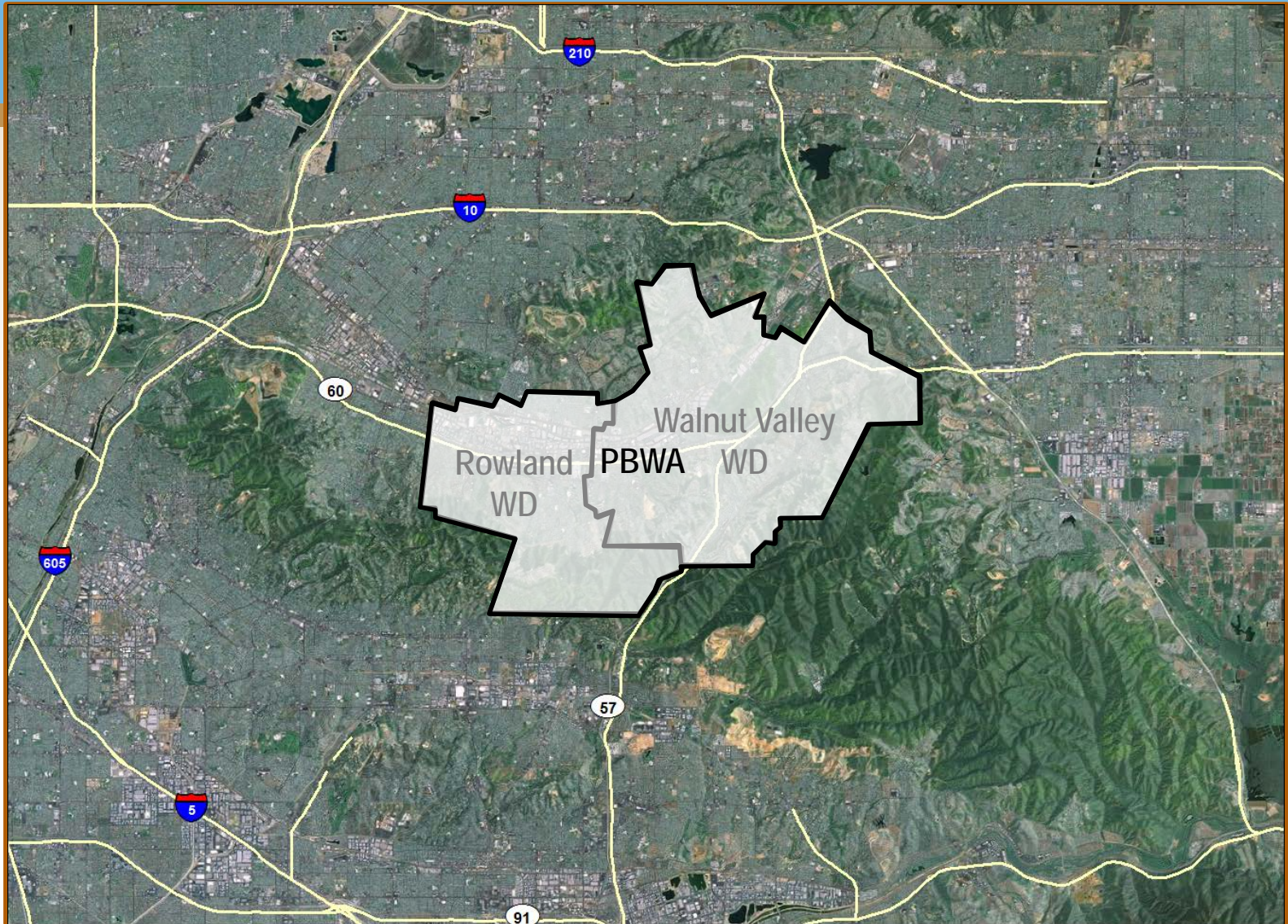
**Regional Water Supply Reliability Program Framework
Capital Improvement Framework**

October 16, 2015

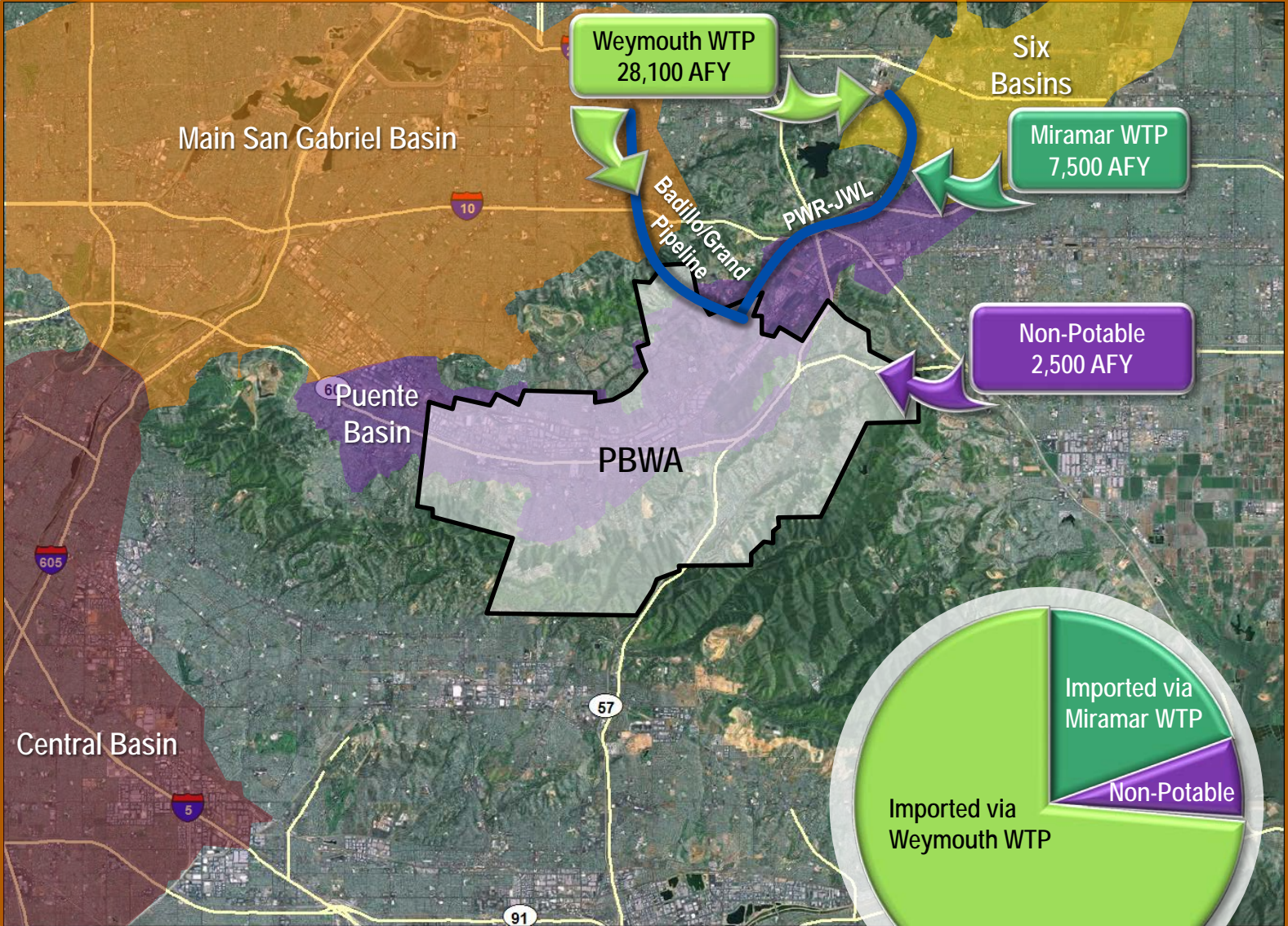
Puente Basin Water Agency (PBWA)

- Organized in 1971 for the protection and utilization of the local, imported and recycled water supply within Puente Basin
- PBWA is a joint powers authority between:
 - Rowland Water District (RWD)
 - Walnut Valley Water District (WVWD)

PBWA is RWD and WVWD



Current PBWA Supplies (Average Year)



Limited Supply Diversification Poses Near- and Long-Term Concerns

- Reliability
 - **Supply:** SWP and Colorado supply restrictions and limitations
 - **Conveyance:** Seismic or other vulnerabilities
 - **Treatment:** Status as Miramar surplus customer, plant shutdowns
- Cost
 - MWD/TVMWD cost projected to increase
 - PBWA unable to influence cost

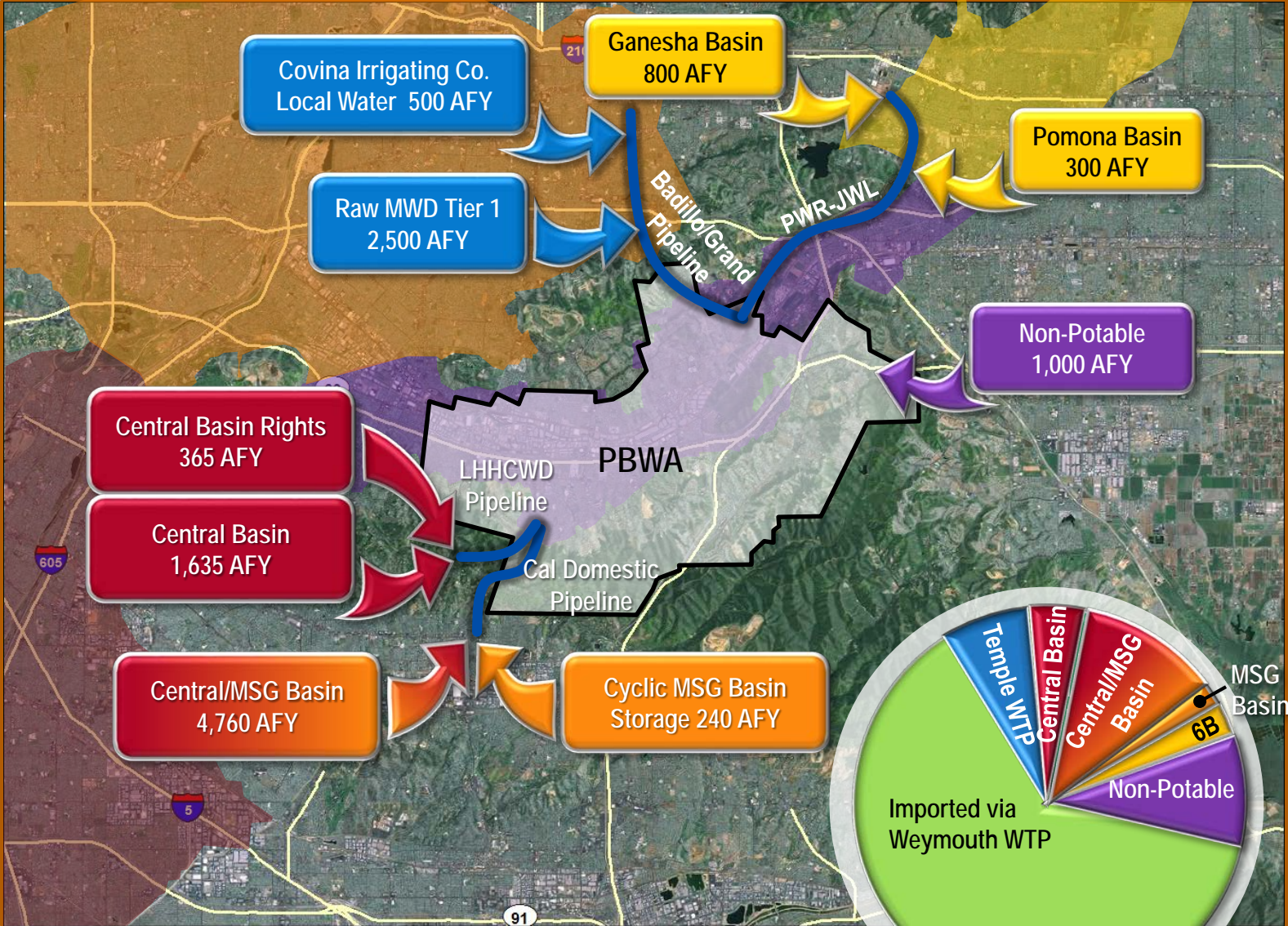
PBWA Has Created the Regional Water Supply Reliability (RWSR) Program to:

- Increase supply diversification
- Reduce use of treated imported water
- Provide a cost-effective supply when compared to MWD rates
- Leverage assets to the benefit of customers
- Increase treatment of contaminated water supplies
- Optimize the use of current facilities
- Provide regional concept to maximize capacity at Miramar

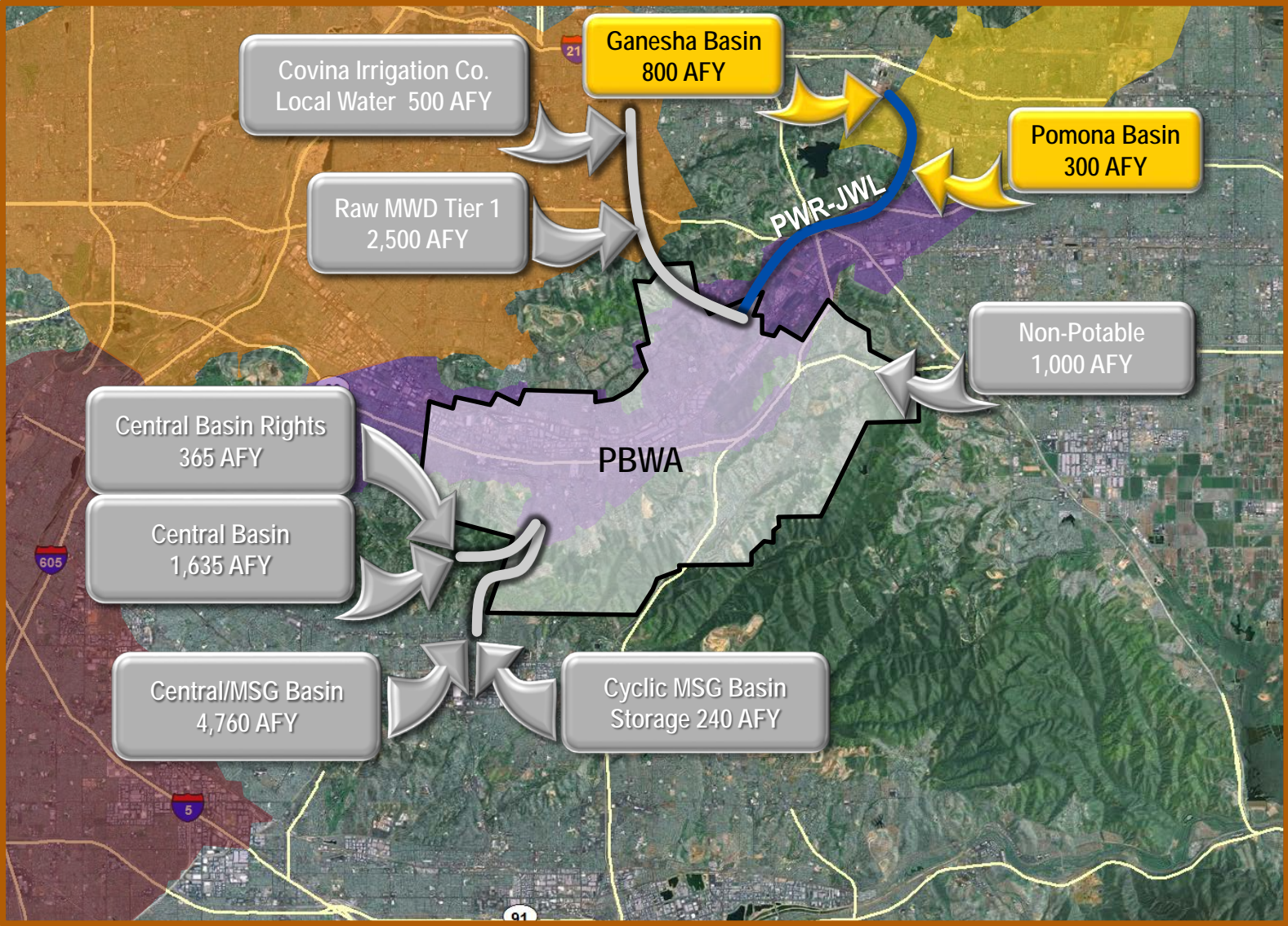
RWSR Program Framework Is in Two Phases

Phase	Supply On-line	Status
Phase 1a	2012-2013	<ul style="list-style-type: none">• Some supplies acquired• Facilities designed• CEQA completed
Phase 1b	2013-2014	<ul style="list-style-type: none">• Potential supplies identified• Some facilities designed• Some CEQA completed
Phase 1c	2014-2015	<ul style="list-style-type: none">• Potential supplies identified• Initial feasibility of facilities assessed
Phase 2	2015-2020	<ul style="list-style-type: none">• Potential supplies identified• Alternatives developed for evaluation

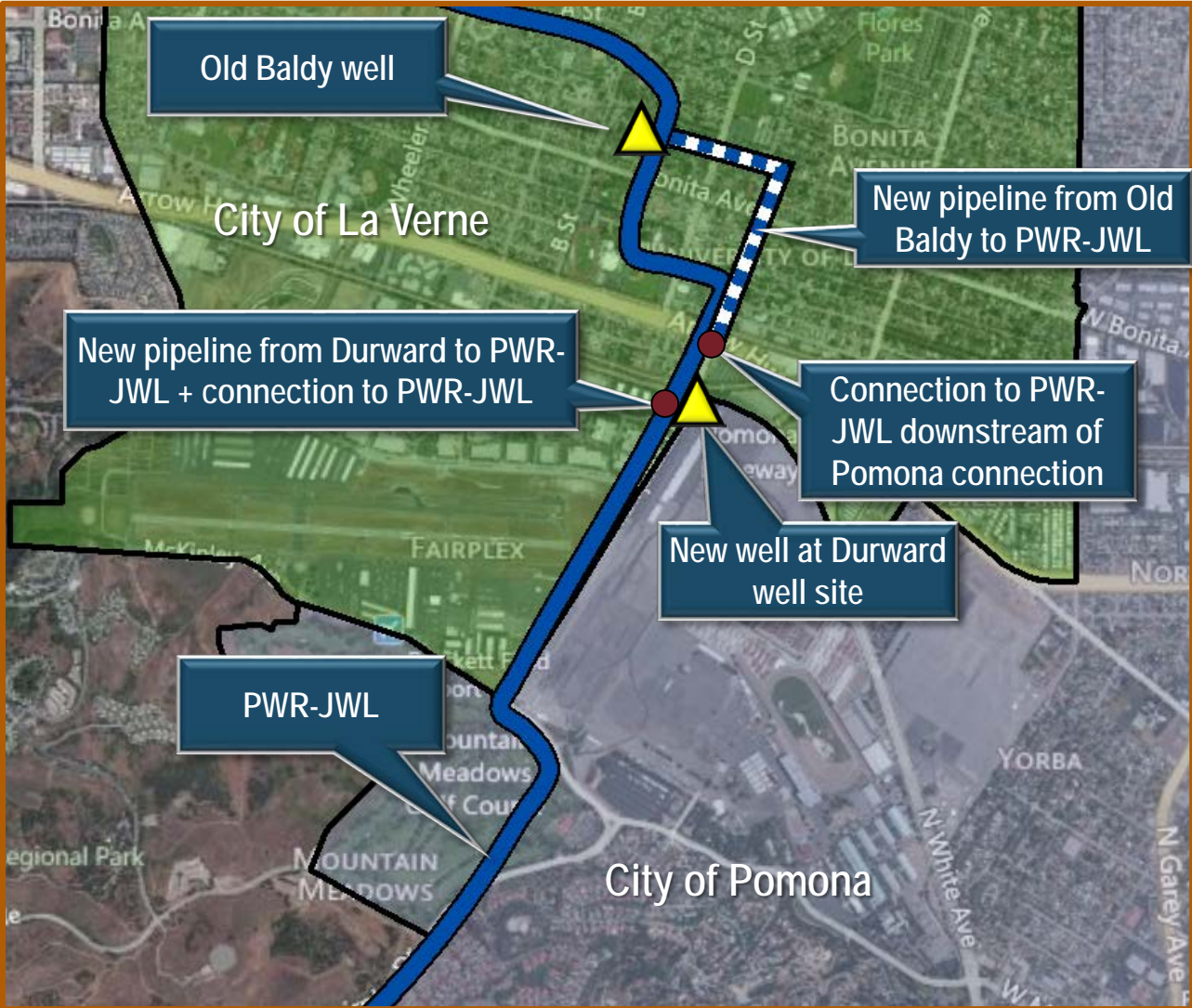
Phase 1 Will Add Several New Supplies



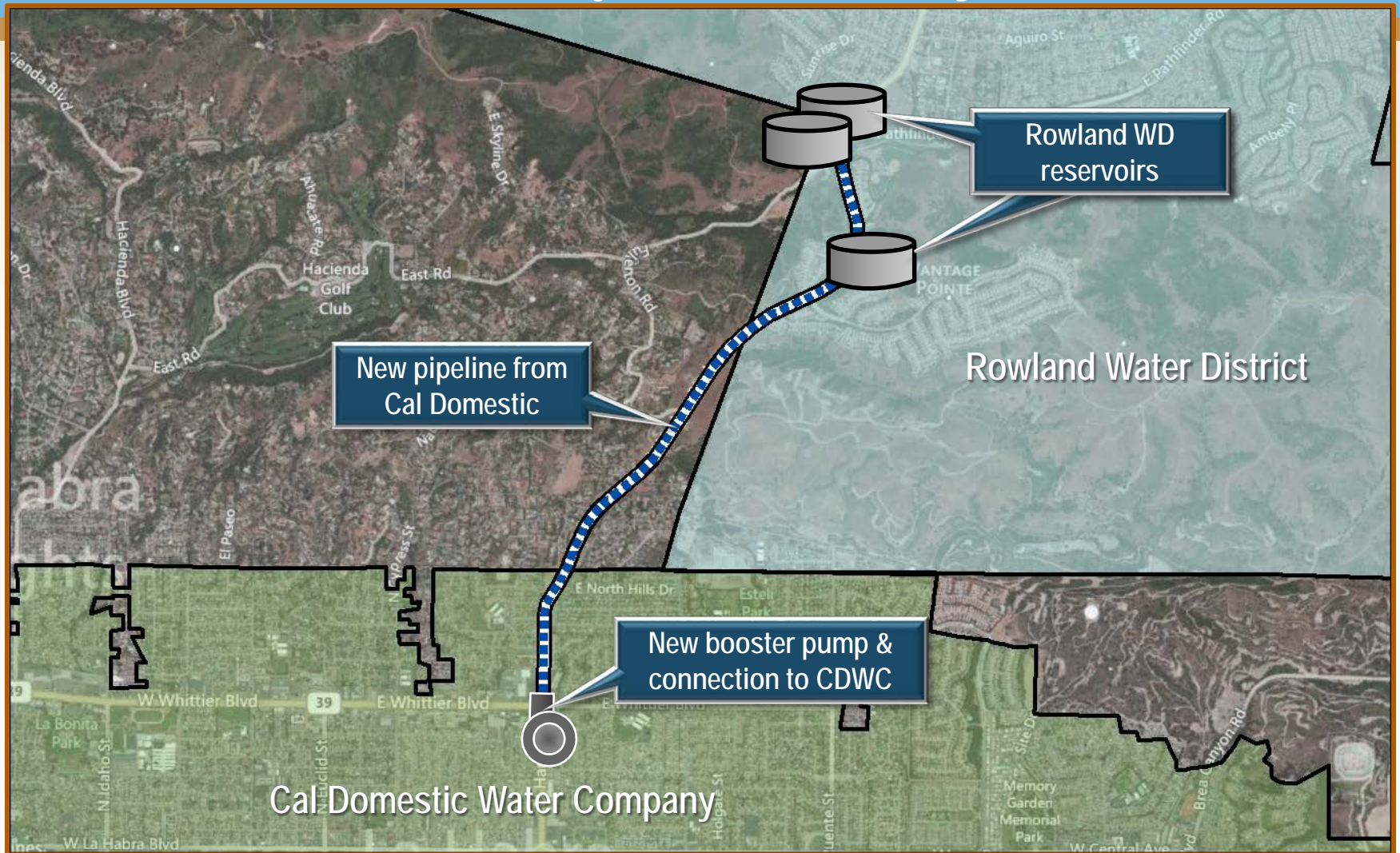
Six Basins Regional Projects



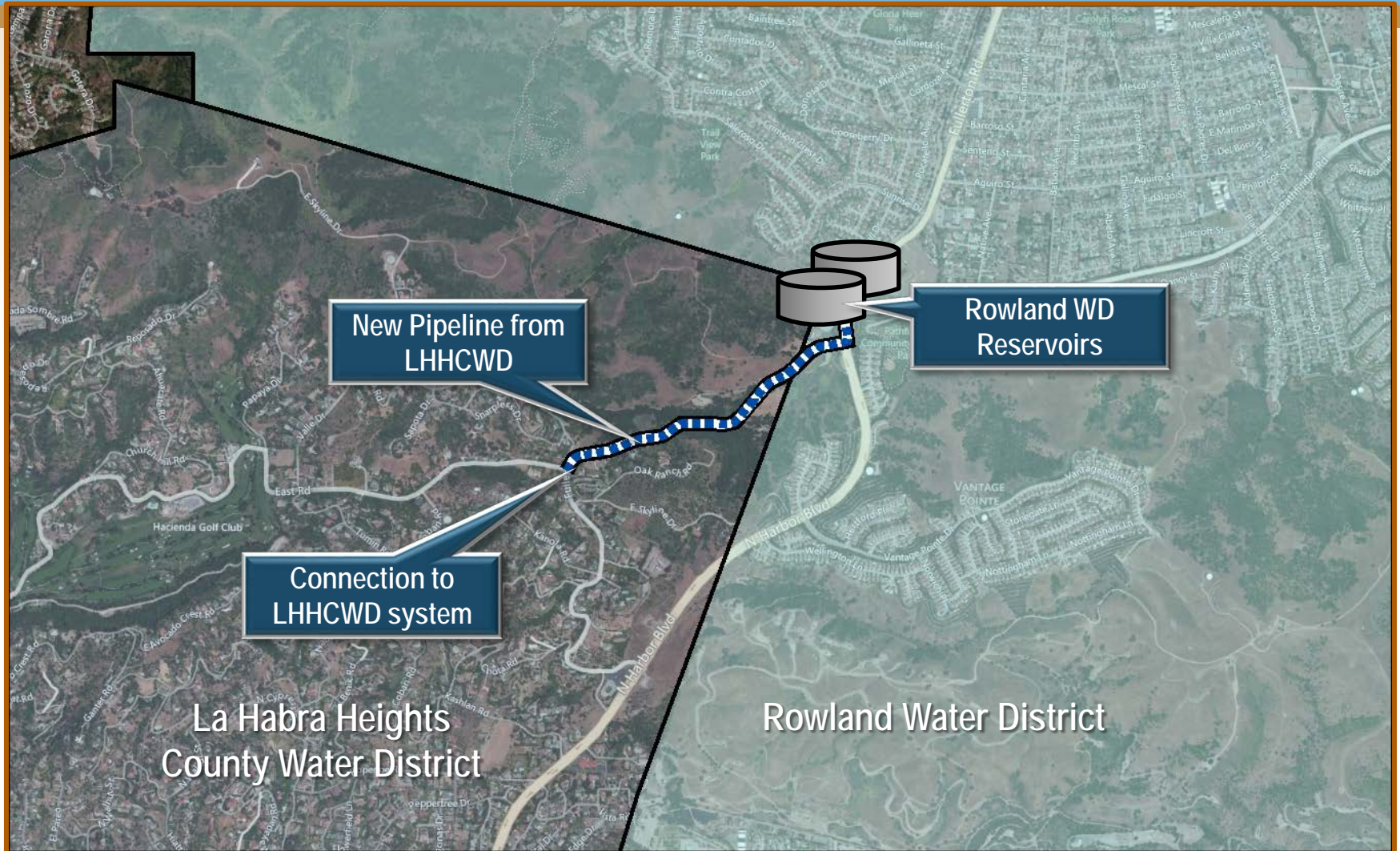
Six Basins Regional Projects



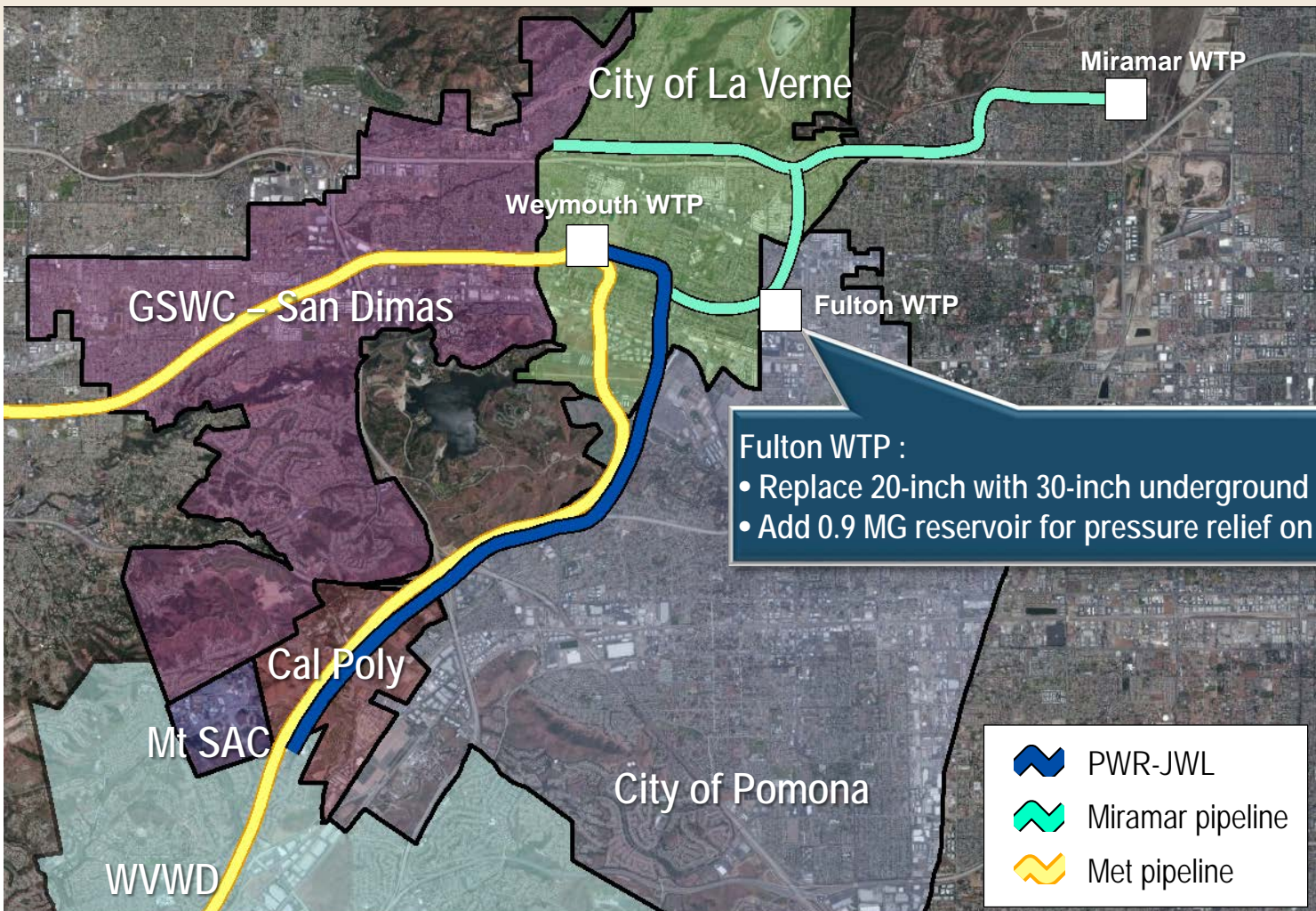
California Domestic Water Company Pipeline and Pump Station Project



La Habra Heights County Water District Pipeline Project



Regional Miramar Solution: Fix Operational Constraints

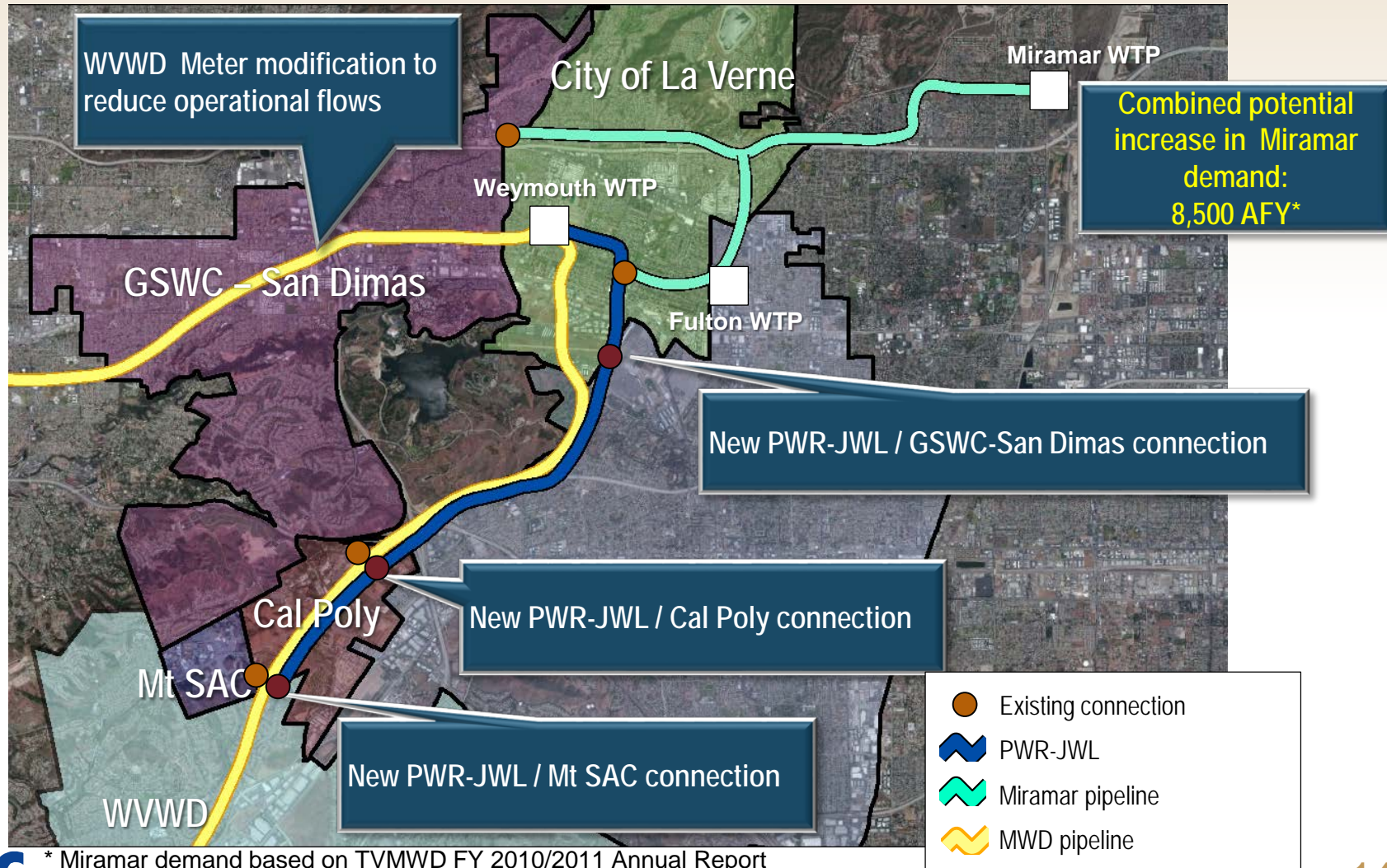


Fulton WTP :

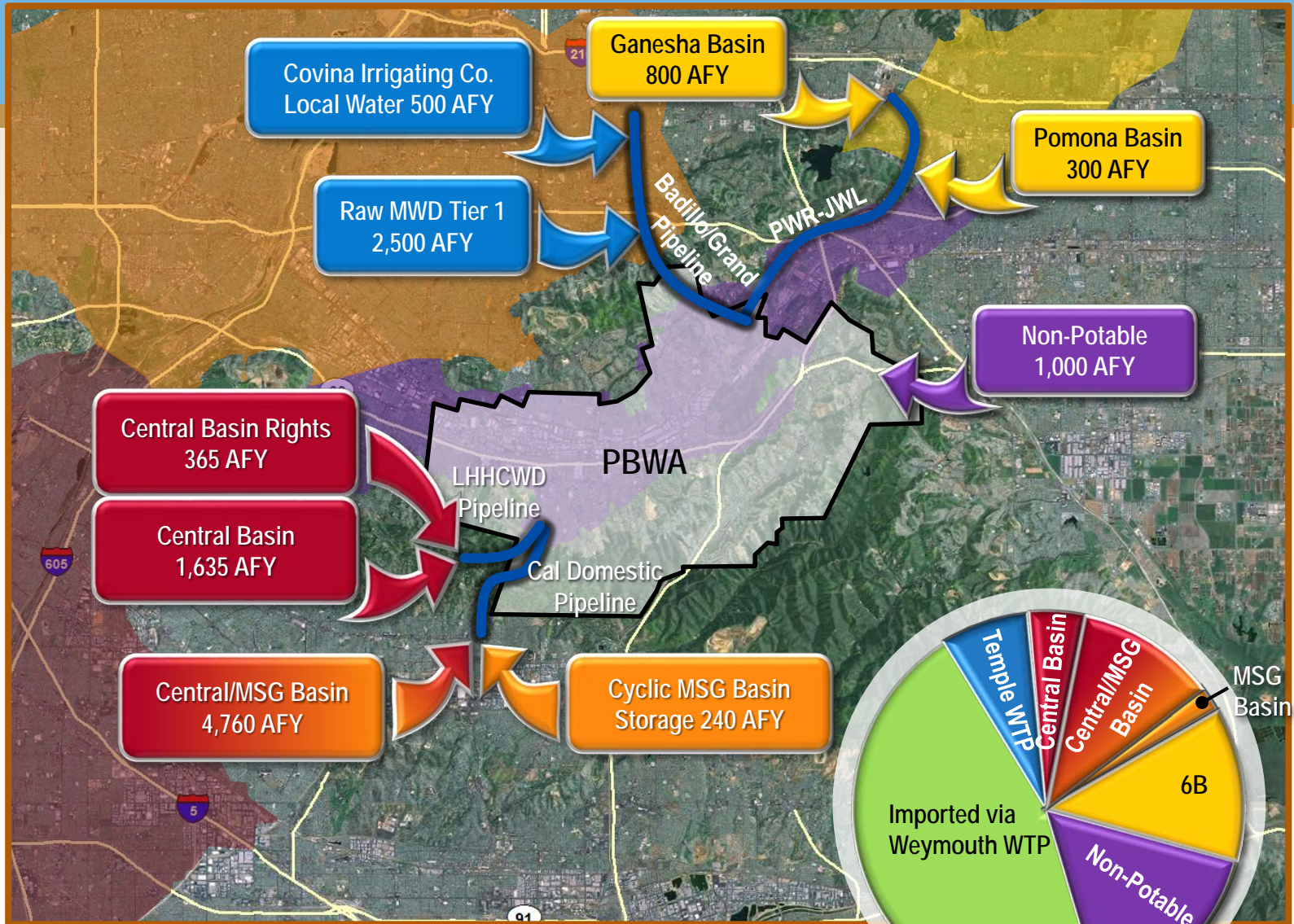
- Replace 20-inch with 30-inch underground piping
- Add 0.9 MG reservoir for pressure relief on PWR

	PWR-JWL
	Miramar pipeline
	Met pipeline

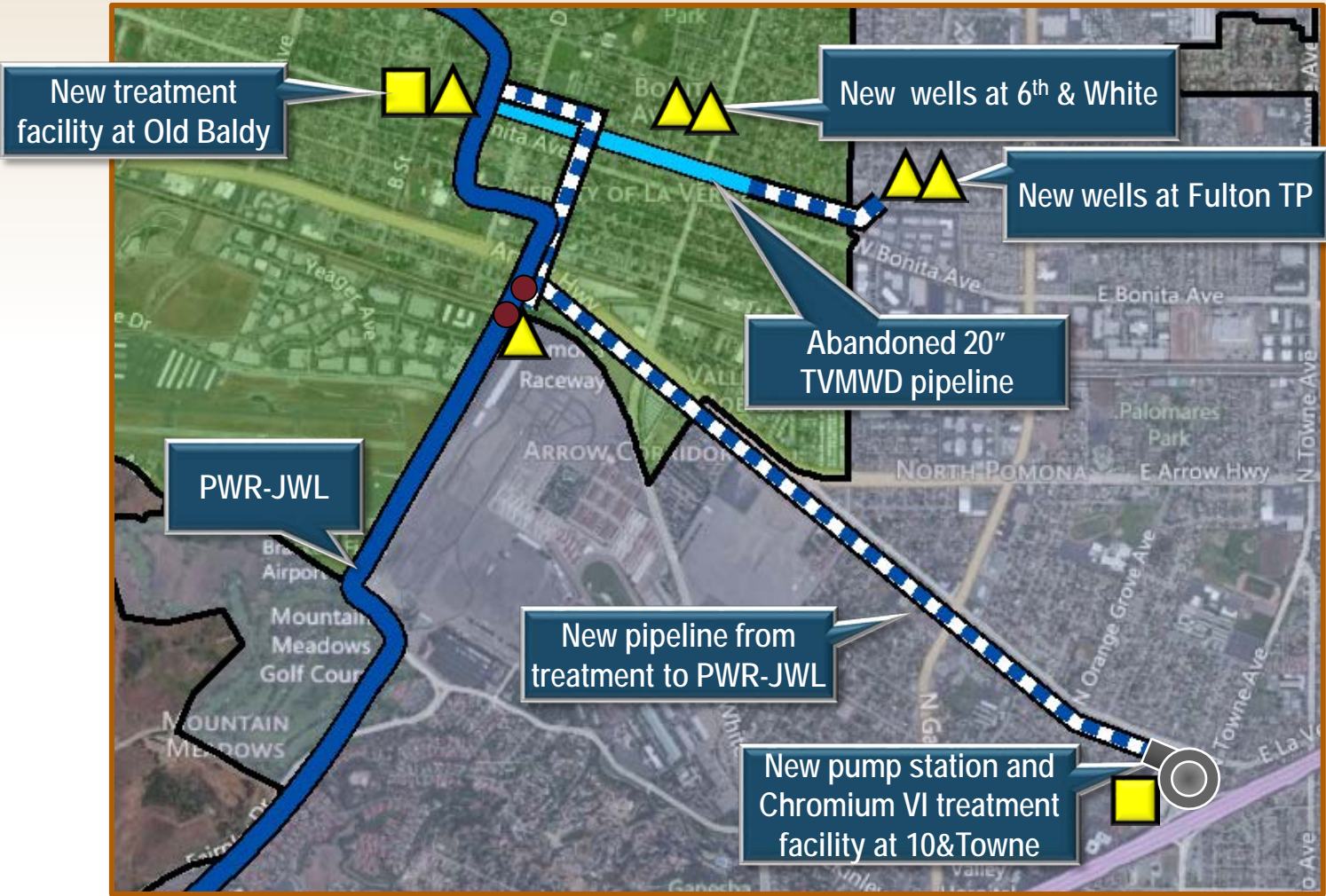
Regional Miramar Solution: Shift Demand



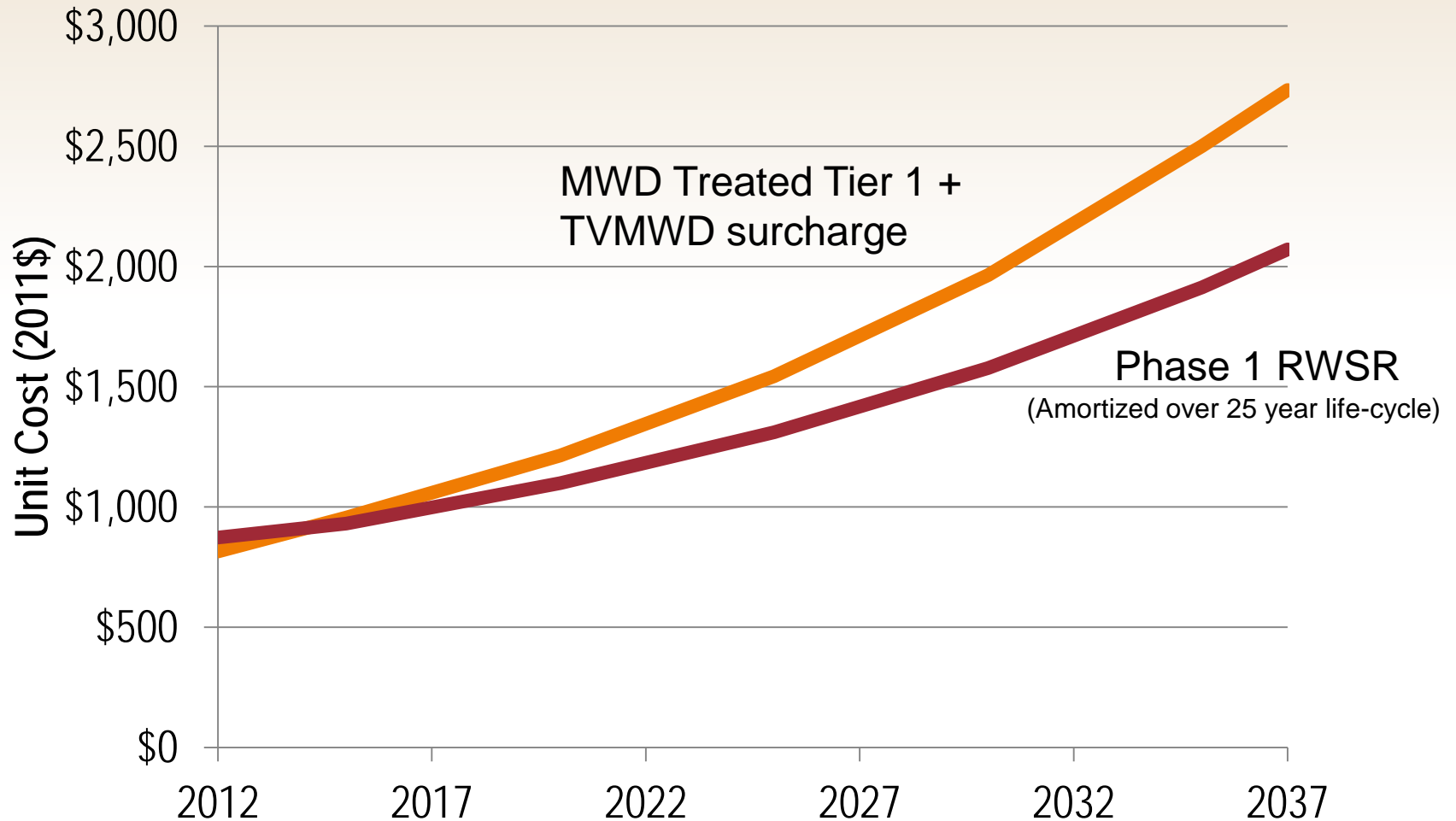
Phase 2 Additional Supplies



Six Basins Regional Projects



RWSR Program Will Provide a Reliable and Cost Effective Supply for PBWA



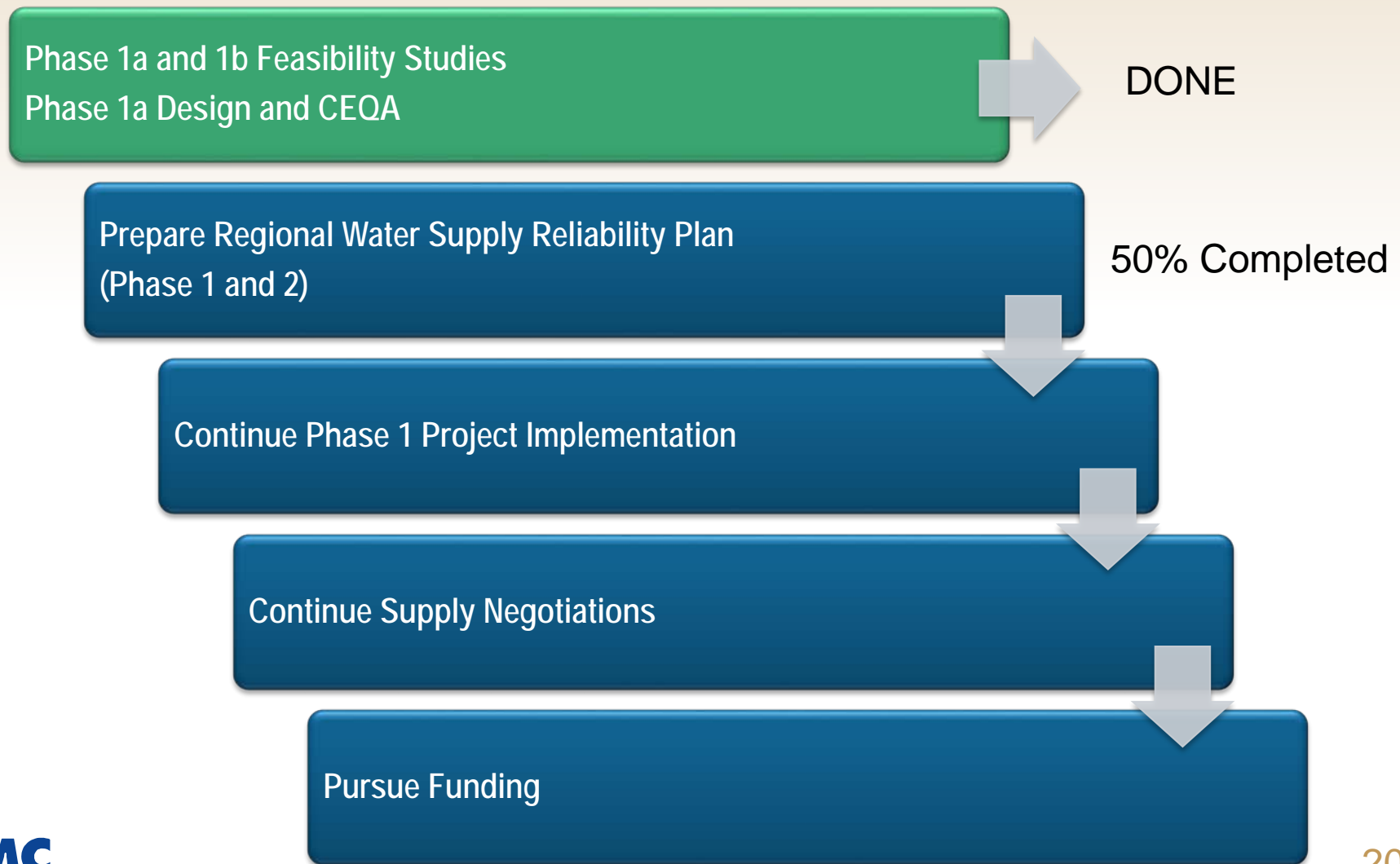
RWSR Program Costs Can Also Be Offset Through Funding

Funding Program	Status
IRWMP Prop 84, Round 2 Implementation Grant (DWR)	<ul style="list-style-type: none">• Phase 1b added to IRWMP Project List• \$3.0M grant application due March 2013
Local Resources Program (MWD)	<ul style="list-style-type: none">• For recycled water or naturally impaired waters• Rebates up to \$250/AF• Ongoing program
Title XVI WaterSmart Program (USBR)	<ul style="list-style-type: none">• For recycled water or naturally impaired waters• Submit early 2013
Infrastructure State Revolving Fund (SRF) Loans (I-Bank)	<ul style="list-style-type: none">• Low-cost financing for infrastructure projects• Loans up to \$10M• Ongoing program

PBWA Has Created the Regional Water Supply Reliability (RWSR) Program to:

- Increase supply diversification
- Reduce use of treated imported water
- Provide a cost-effective supply when compared to MWD rates
- Leverage assets to the benefit of customers
- Increase treatment of contaminated water supplies
- Optimize the use of current facilities
- Provide regional concept to maximize capacity at Miramar

Pathway to RWSR Program Framework Implementation



PUENTE BASIN WATER AGENCY

Regional Water Supply Reliability Program Framework

SEPTEMBER 2012

